

# Importing and flashing pre-configured profiles.

Presented by  
Control Solutions  
(503) 410-5996  
[vfcdataloggers.com](http://vfcdataloggers.com)

# Importing and flashing pre-configured profiles.

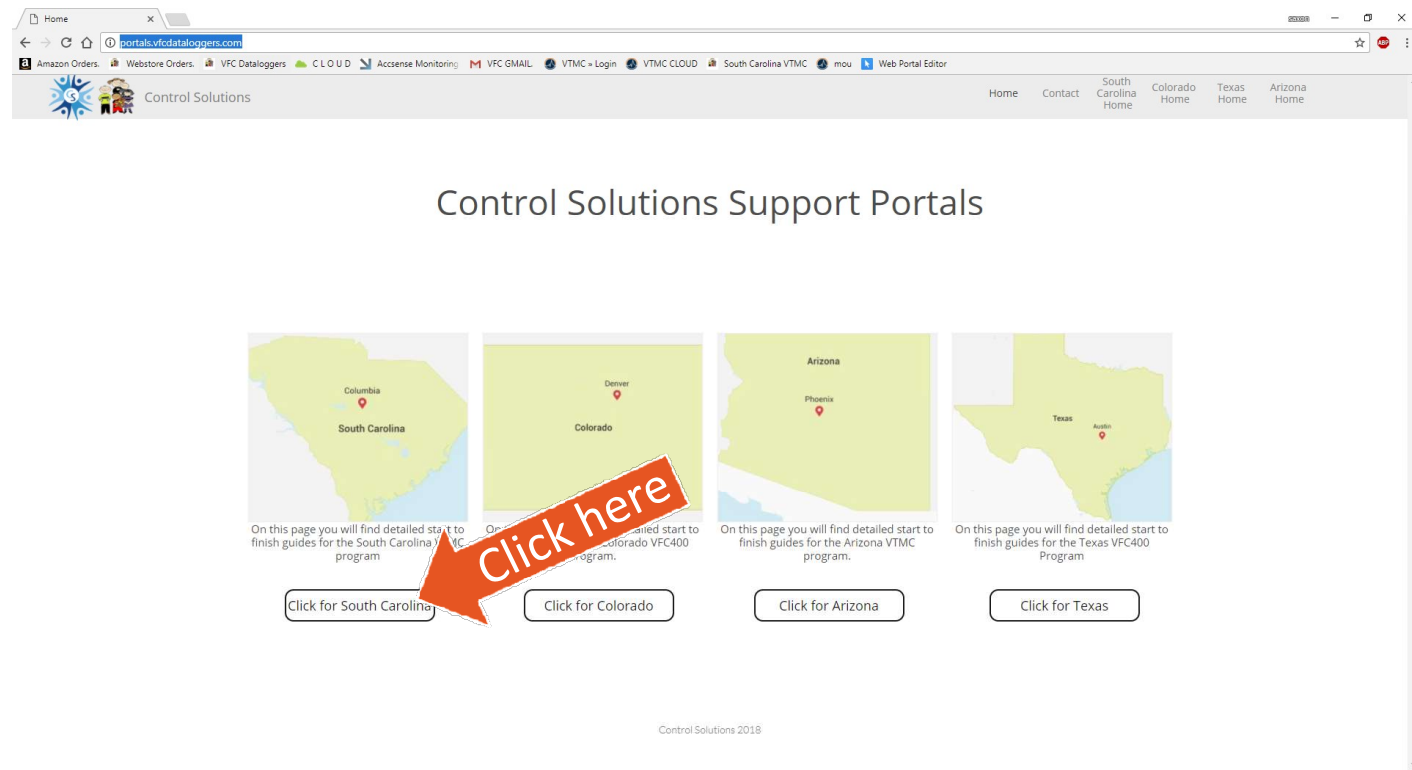
- This guide assumes you have previously installed our Control Solutions VTMC software for the VFC400. Please use the VFC400 instruction page if you need assistance installing it.
- These profiles are pre-configured! What this means for you: You will not be required to enter the configuration parameters manually.
- For your convenience all state supplied loggers will come pre-configured and ready to start out of the box. Configuration will **NOT** be required.
- Using and flashing profiles is only necessary if:
  - If you acquire or purchase a new device.
  - You've had an incident that requires the data logger to have a new profile flashed onto it.

# Importing and flashing pre-configured profiles.

**Step 1.** Open your internet browser. We use Google chrome but any will work.

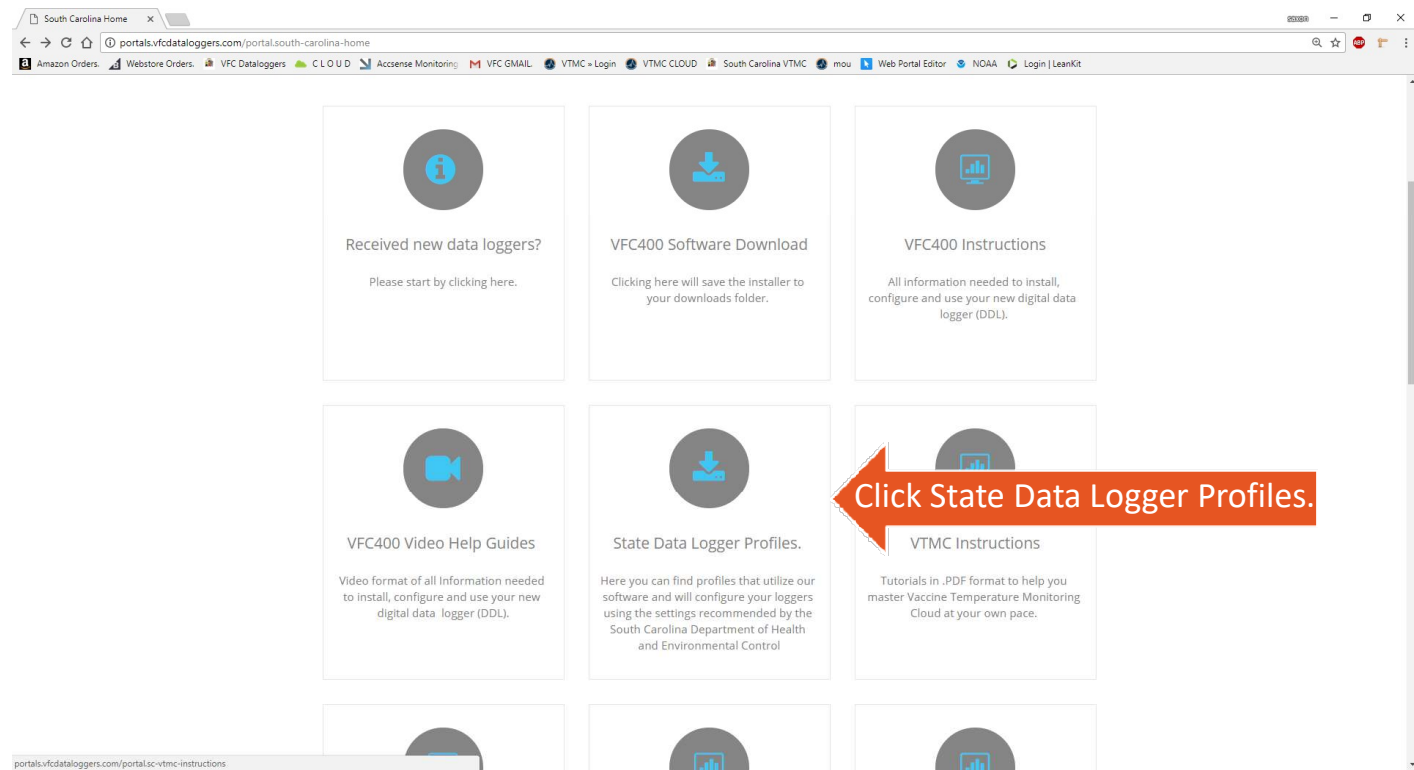
**Step 2.** Navigate to [portals.vfcdataloggers.com](https://portals.vfcdataloggers.com)

**Step 3.** Click on south Carolina.



# Importing and flashing pre-configured profiles.

- Here we have the South Carolina support portal homepage.
- From here we are going to click on State Data Logger Profiles.



# Importing and flashing pre-configured profiles.

- To download a pre-configured profile click the button with the respective cooling unit of your choice or both!

- Here on the right I have selected the fridge profile.

The screenshot shows a web browser window with the URL `portals.vfcdataloggers.com/sc-state-materials`. The page title is "State Materials". Below the title, there is a paragraph: "Below you can download the profiles for your VFC400 with the recommended settings from South Carolina Department of Health and Environmental Control". A warning message follows: "Please be aware your computer will not be able to open the configuration profiles unless you have our Control Solutions VTMC software installed. Software downloads can be found [here](#)". At the bottom, there is a list of three download links: "Instructions for importing profiles", "Download Fridge Profile", and "Download Freezer Profile". A large orange arrow points to the "Download Fridge Profile" link with the text "Click Download".

Control Solutions

Home Contact Colorado Home South Carolina Home Arizona Home Texas Home

State Materials

Below you can download the profiles for your VFC400 with the recommended settings from South Carolina Department of Health and Environmental Control

Please be aware your computer will not be able to open the configuration profiles unless you have our Control Solutions VTMC software installed. Software downloads can be found [here](#)

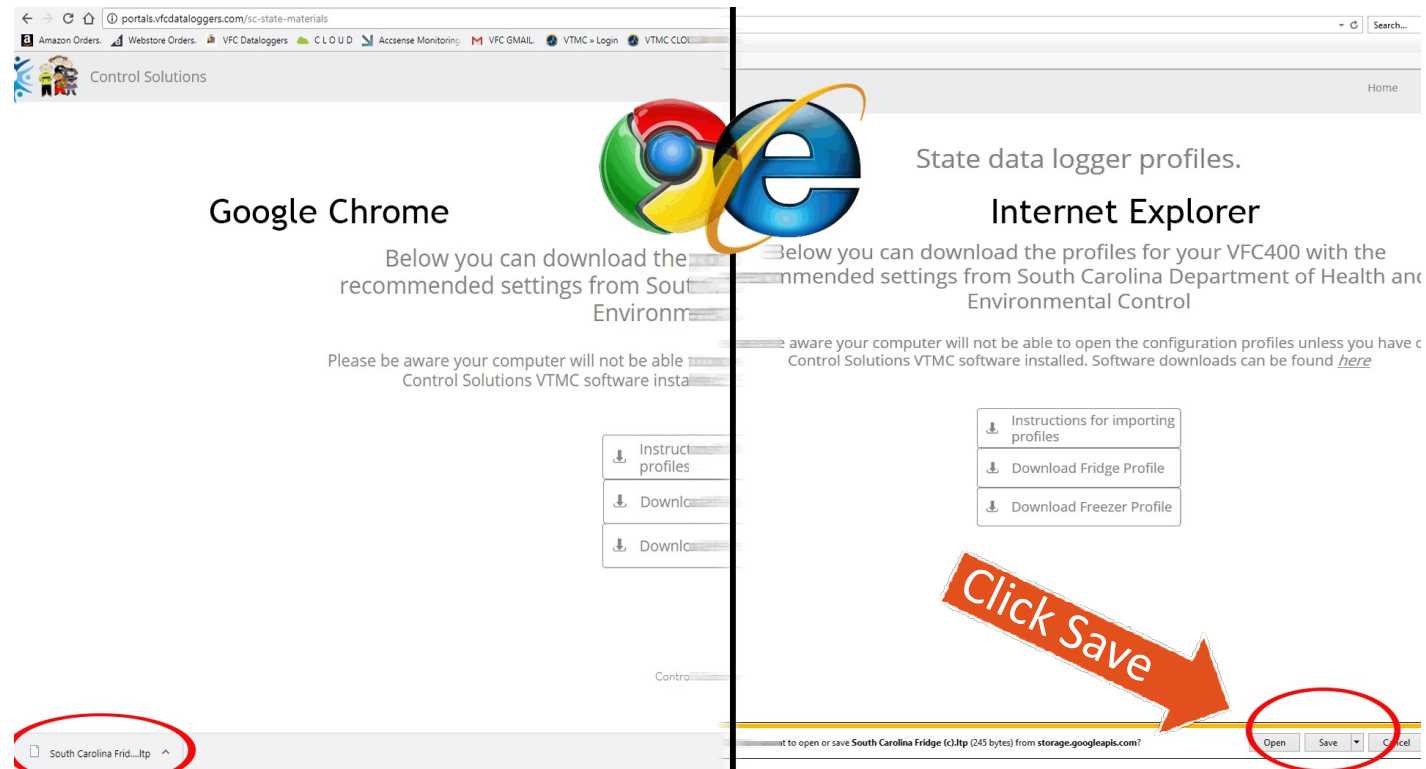
- Instructions for importing profiles
- Download Fridge Profile
- Download Freezer Profile

Control Solutions 2018

# Importing and flashing pre-configured profiles.

- Left: Google chrome. Download status is bottom left corner. Click save if prompted.

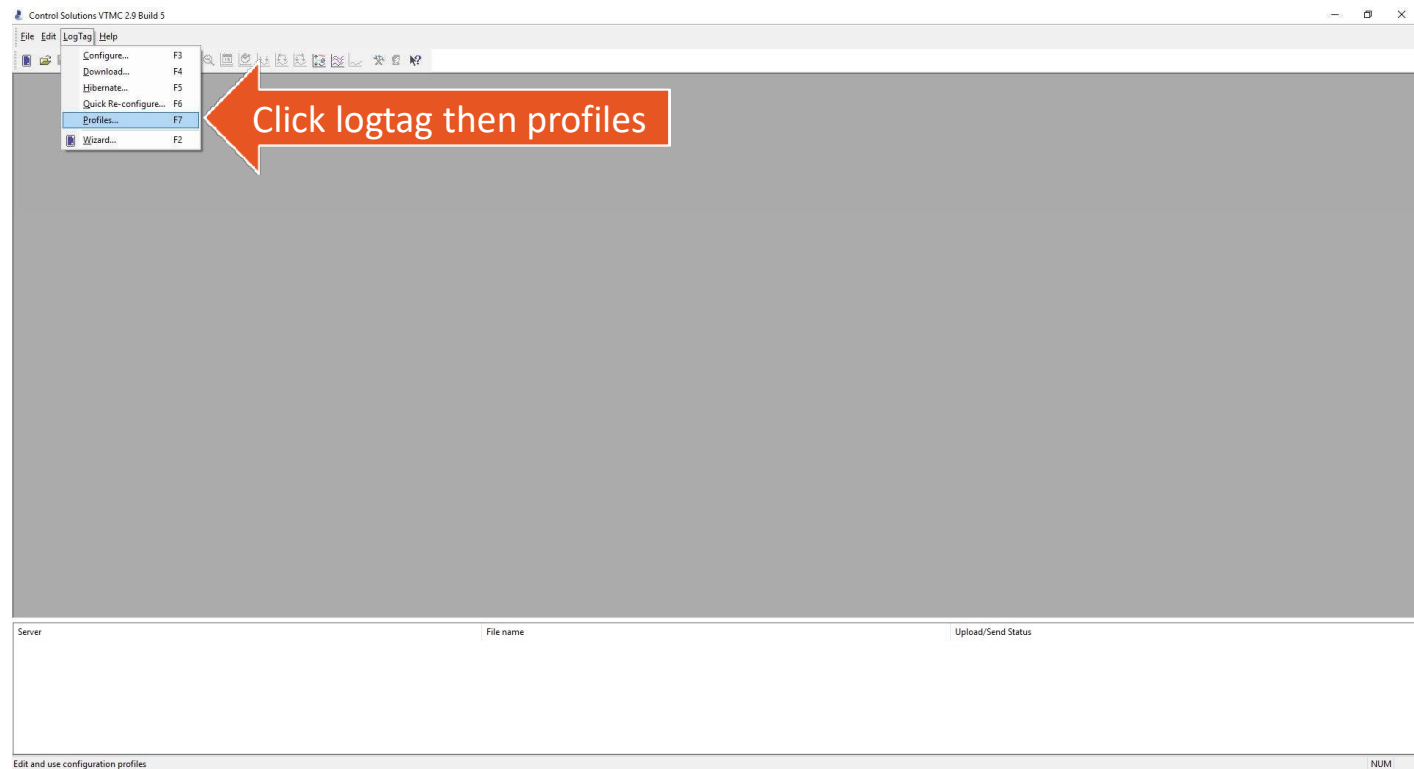
- Right: Internet explorer. Download prompt bottom center. Click save.



# Importing and flashing pre-configured profiles.

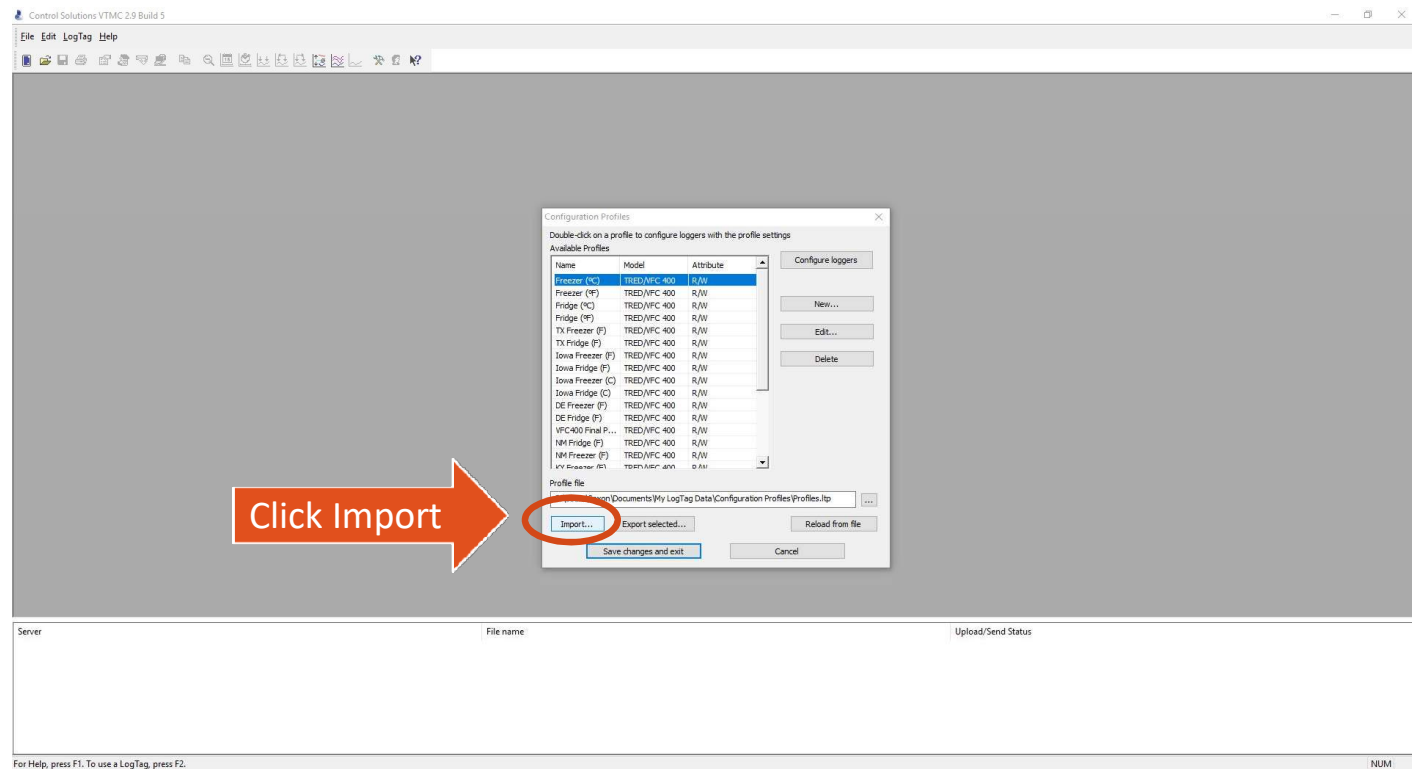
Click the “LogTag” menu button and navigate to Profiles.

Note: You can use the Function keys listed on the right of the menu as a shortcut if you would like.



# Importing and flashing pre-configured profiles.

- The configuration profile manager should have opened up.
- Now we are going to click on import so we can locate and import the configuration profile we downloaded earlier.

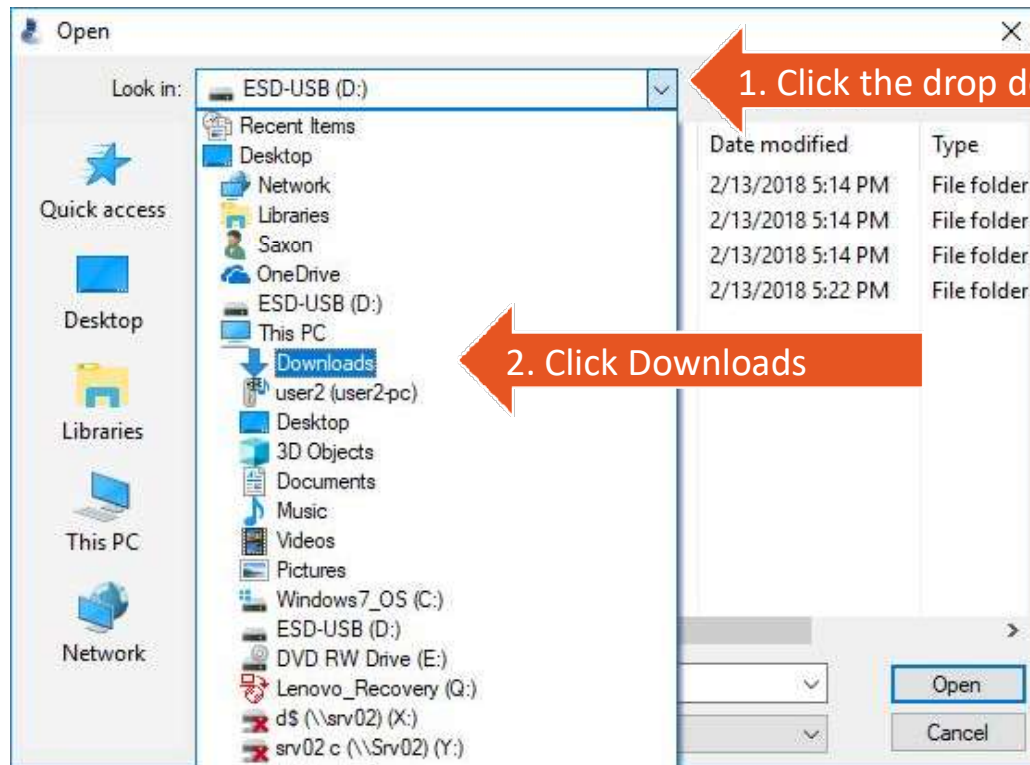




# Importing and flashing pre-configured profiles.

After clicking import, A file manger window will open.

1. Click the drop down arrow to open the menu.
2. Locate downloads.
3. Click on downloads.

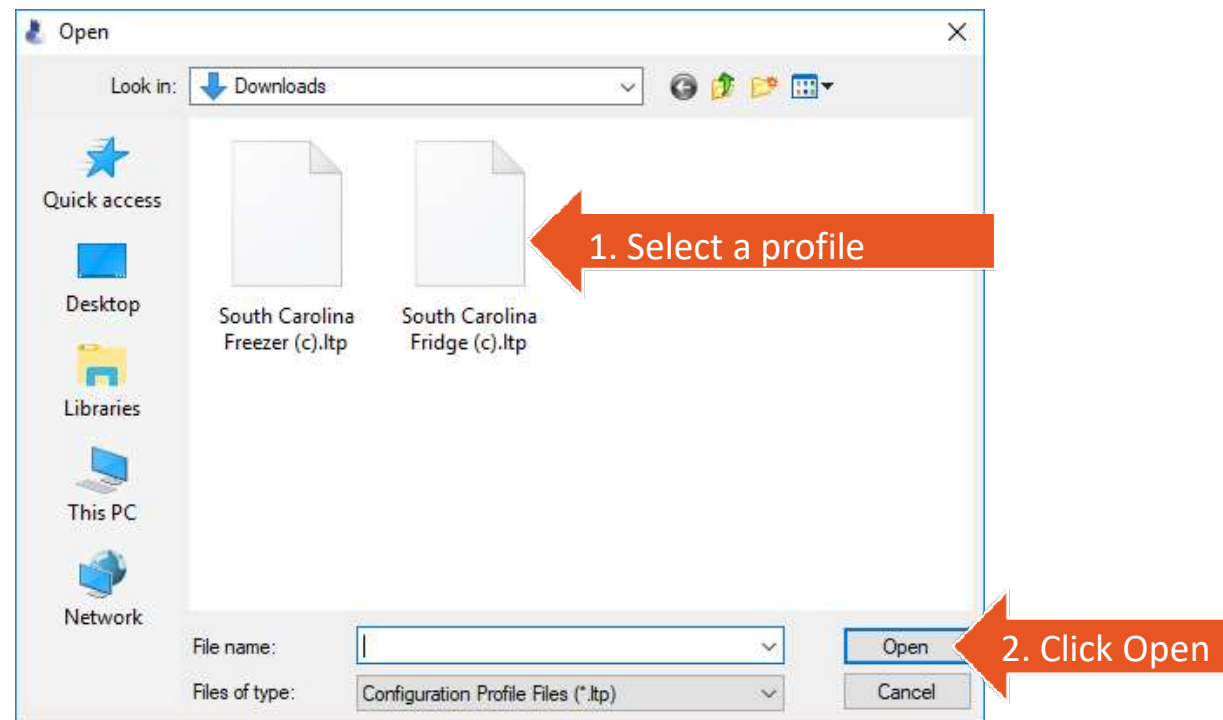


# Importing and flashing pre-configured profiles.

Now that we are in our downloads folder:

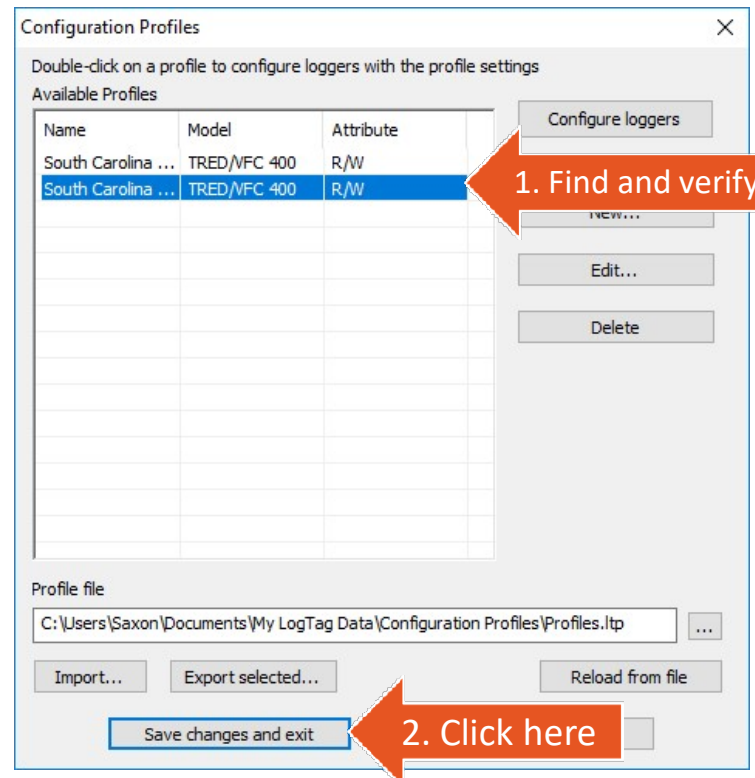
1. Locate and single click the profile.
2. Click open.

Note: You can only import one profile at a time.



# Importing and flashing pre-configured profiles.

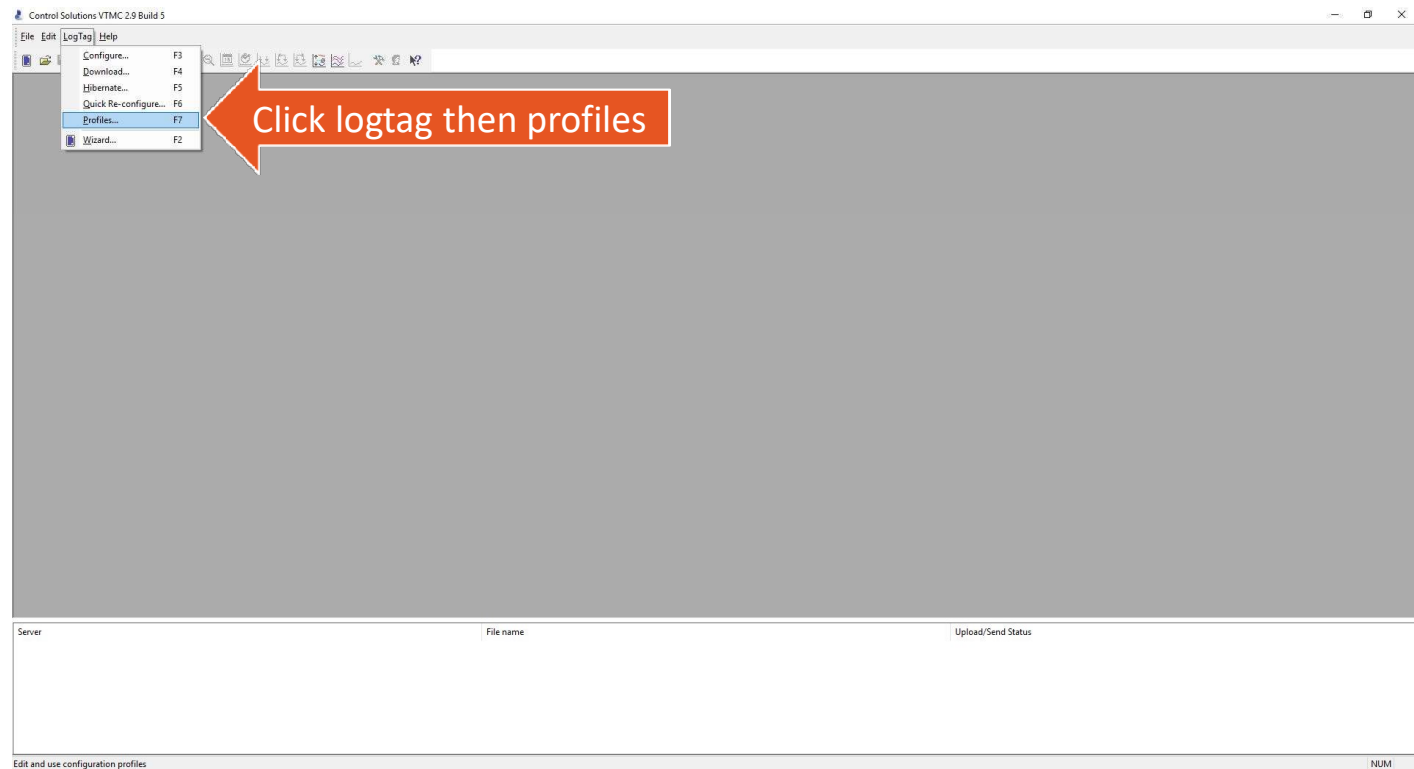
- Verify your profile imported.
- Save the imported profile settings.



# Importing and flashing pre-configured profiles.

•After saving the new profile lets re-open our profile manager.

1. Click LogTag.
2. Click profiles.



# Importing and flashing pre-configured profiles.

- Now we will flash our new profile onto our data logger.
- First, we make sure our docking station is plugged into the PC via USB port.
- Now we insert our data logger into the Docking Station firmly.



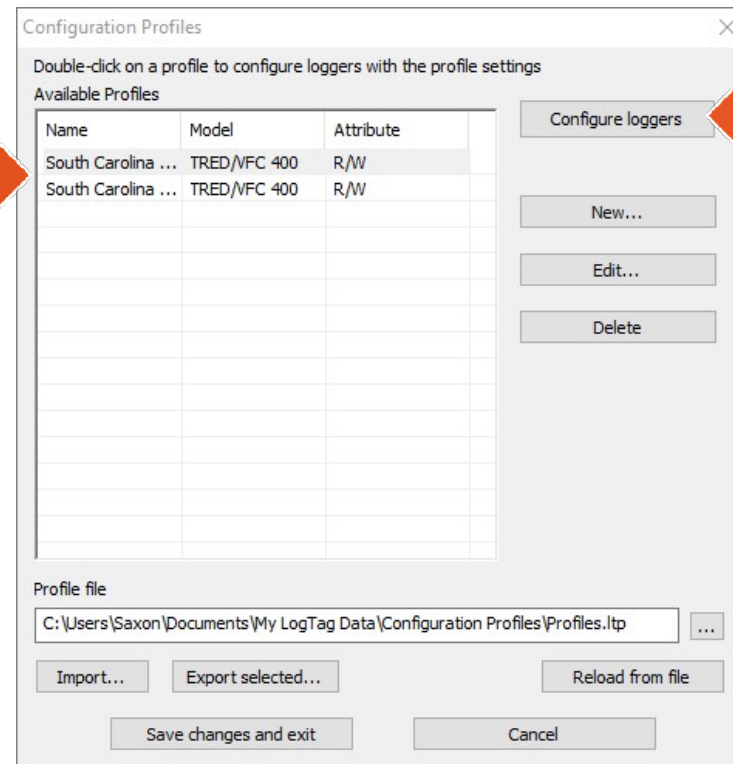
# Importing and flashing pre-configured profiles.

- Now that we have made sure our data logger is in the docking station we can return to the profile manger we left open.

- To flash a new profile onto a device:

- Select desired profile.
- Click configure loggers.

1. Select a Profile



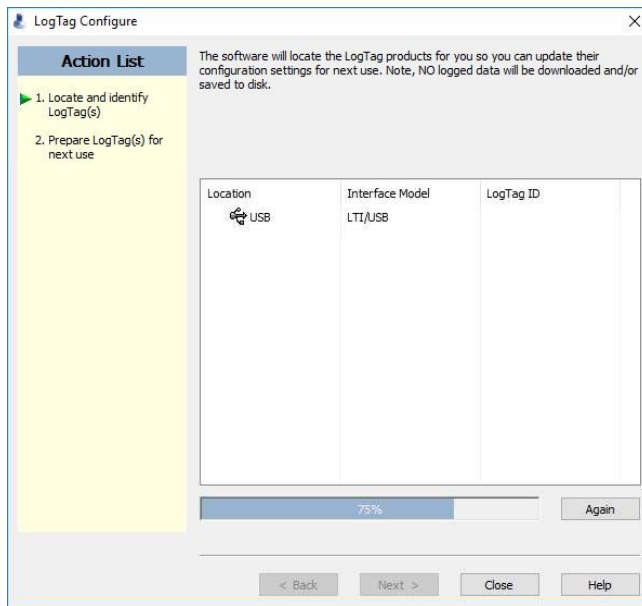
2. Click here

# Importing and flashing pre-configured profiles.

The configuration flashing process is made up of three steps. Do not remove the logger if you see these.

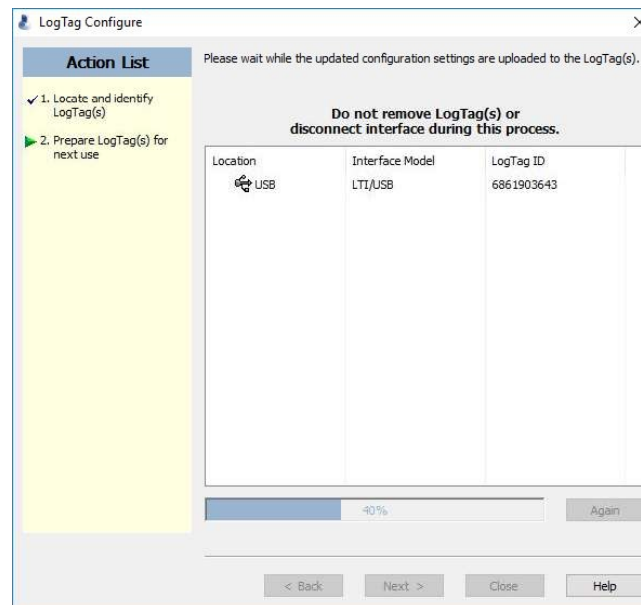
## 1. This is the detection step.

Here the software prepares the device.



## 2. This is the flash step.

The software is uploading the new settings to the device.



## 3. This is the final step.

“The logtag(s) below are now ready to start/be started” and the 100% loading bar indicates success. The device is now ready for use!

